

STATUTORY DECLARATION

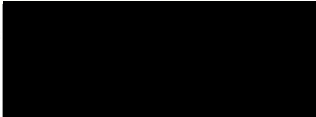
HIGHWAYS ACT 1980 SECTION 31 (6)

I WENDY HIGLETT DO SOLEMNLY AND SINCERELY DECLARE as follows:

1. The Woodland Trust, a company limited by guarantee and registered charity no. 294344, is and has been since 20th December 1994 the owner of the land known as Warren Farm, East Ewell, Surrey, more particularly delineated on the plan accompanying this declaration and thereon edged red.
2. On the 20th December 1994 the Woodland Trust deposited with Surrey County Council, being the appropriate Council, a statement accompanied by a plan delineating our property by red edging which stated the ways coloured purple on the said plan and on the plan accompanying this declaration had been dedicated as footpaths and that no other ways had been dedicated as highways over our property.
3. No additional ways have been dedicated over the land edged red on the plan accompanying this declaration since the statement referred to in 2 and at the present time the Woodland Trust has no intention of dedicating any more public rights of way over its property.

AND I MAKE this solemn declaration on the ~~30th~~ ^{30th} day of October 2000 conscientiously believing it to be true and by virtue of the Statutory Declarations Act 1835.

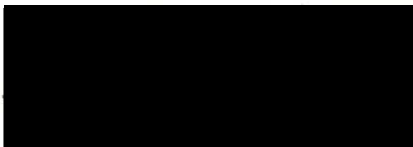
Declared at: Mills & Reeve, Francis House, 112 Hills Road, Cambridge, CB2 1PH



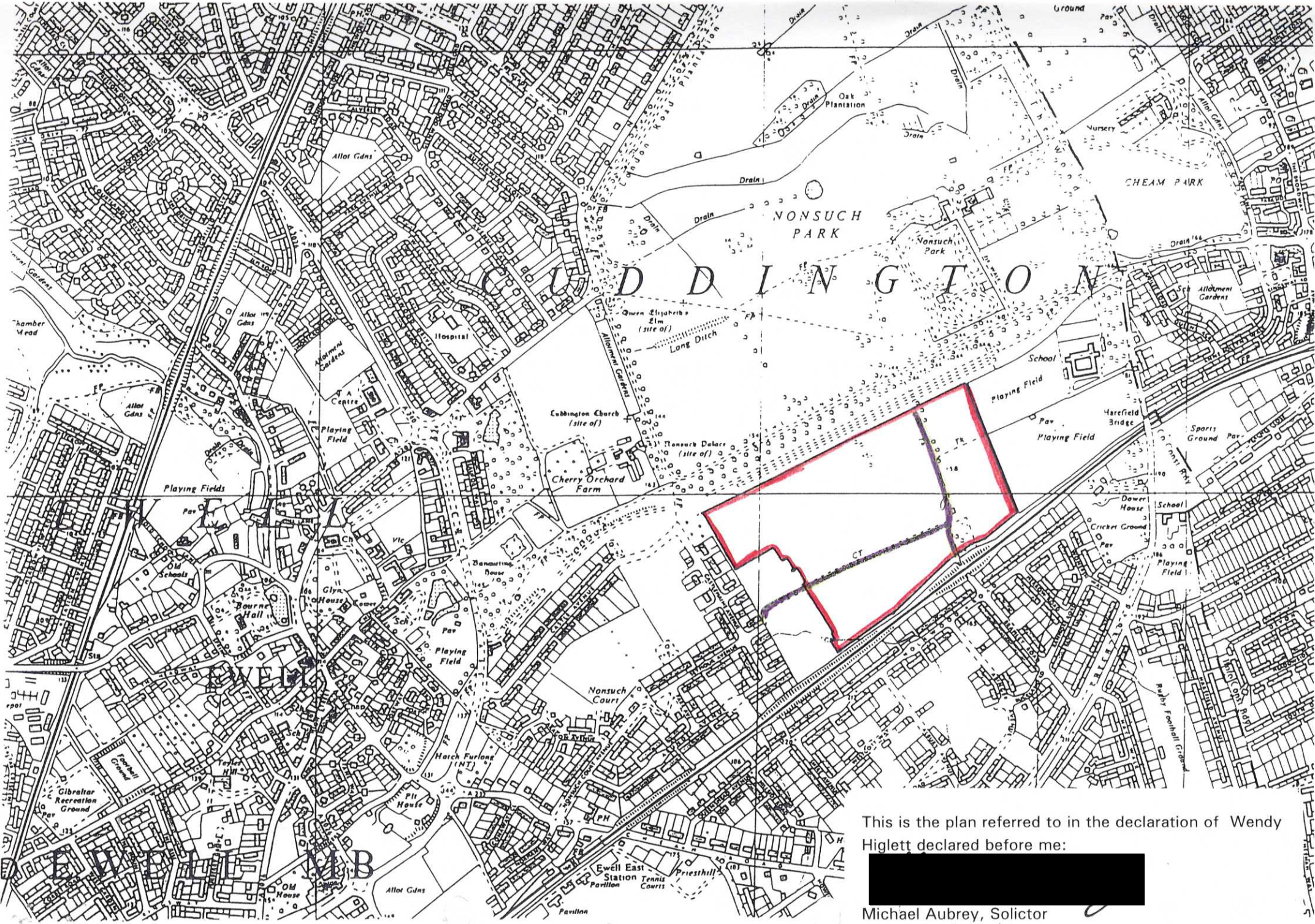
Wendy Higlett

Legal Administrator authorised to sign on behalf of the Woodland Trust

Before me, Michael Aubrey, Solicitor

.....


WARREN FARM, EAST EWELL, SURREY (0660)



This is the plan referred to in the declaration of Wendy Higlett declared before me:



Michael Aubrey, Solicitor
Date: 30th October 2000