

**STATUTORY DECLARATION**  
**SECTION 31(6) OF THE HIGHWAYS ACT 1980**

I CAROLINE HARVEY [landowner] DO SOLEMNLY AND SINCERELY DECLARE as follows:-

- 1 I am and have been since 24<sup>th</sup> September 2002 [day, month, year] the owner of the land known as LAND AT END OF HATHFIELD AVENUE [name of farm, etc] more particularly delineated on the plan accompanying this declaration and thereon edged red.
- 2 On the 5<sup>th</sup> [day] day of August 2003 [month, year] I (or my predecessor in title CAROLINE HARVEY [name]) deposited with Surrey County Council, being the appropriate Council, a statement accompanied by a plan delineating my property by red edging which stated that ~~(the ways coloured brown on the said plan and on the plan accompanying this declaration had been dedicated as highways with public vehicular status\*) (the ways coloured plum on the said plan and on the plan accompanying this declaration have been dedicated as restricted byways\*) (the ways coloured green on the said plan and on the plan accompanying this declaration had been dedicated as bridleways\*) (the ways coloured purple on the said plan and on the plan accompanying this declaration had been dedicated as footpaths\*) (no ways had been dedicated as highways over my property\*).~~
- \* 3 On the 5<sup>th</sup> [day] day of August 2003 [month, year] I (or my predecessor in title CAROLINE HARVEY [name]) deposited with Surrey County Council, being the appropriate Council, a statutory declaration dated 5<sup>th</sup> August 2003 [day, month, year], stating that no additional ways (other than those coloured on the plan accompanying this declaration) had been dedicated as (highways with vehicular status\*) (bridleways\*) (footpaths\*) since the deposit of the Statement referred to in paragraph 2 above.
- \* 4 No additional ways have been dedicated over the land edged red on the plan accompanying this declaration (since the statement dated 5<sup>th</sup> August 2003 [day, month, year] referred to in paragraph 2 above\*) (since the date of the statutory declaration referred to in paragraph 3 above\*) (other than those (highways with vehicular status\*) (restricted byways\*) (bridleways\*) (footpaths\*) coloured on the plan accompanying this declaration\*).
- \* 5 ~~Upon the said plan there is marked in blue a path for which I give consent to members of the public to walk/ride over. However, this path is not being dedicated to the public at large to use.~~
- \* Delete if not applicable.

AND I MAKE this solemn declaration on the 5<sup>th</sup> [day] day of AUGUST 2003 [month, year] conscientiously believing it to be true and by virtue of the Statutory Declarations Act 1835.

Declared at [address]

47A HIGH STREET  
EGHAM  
SURREY  
TW20 9ES

Signature [of landowner]



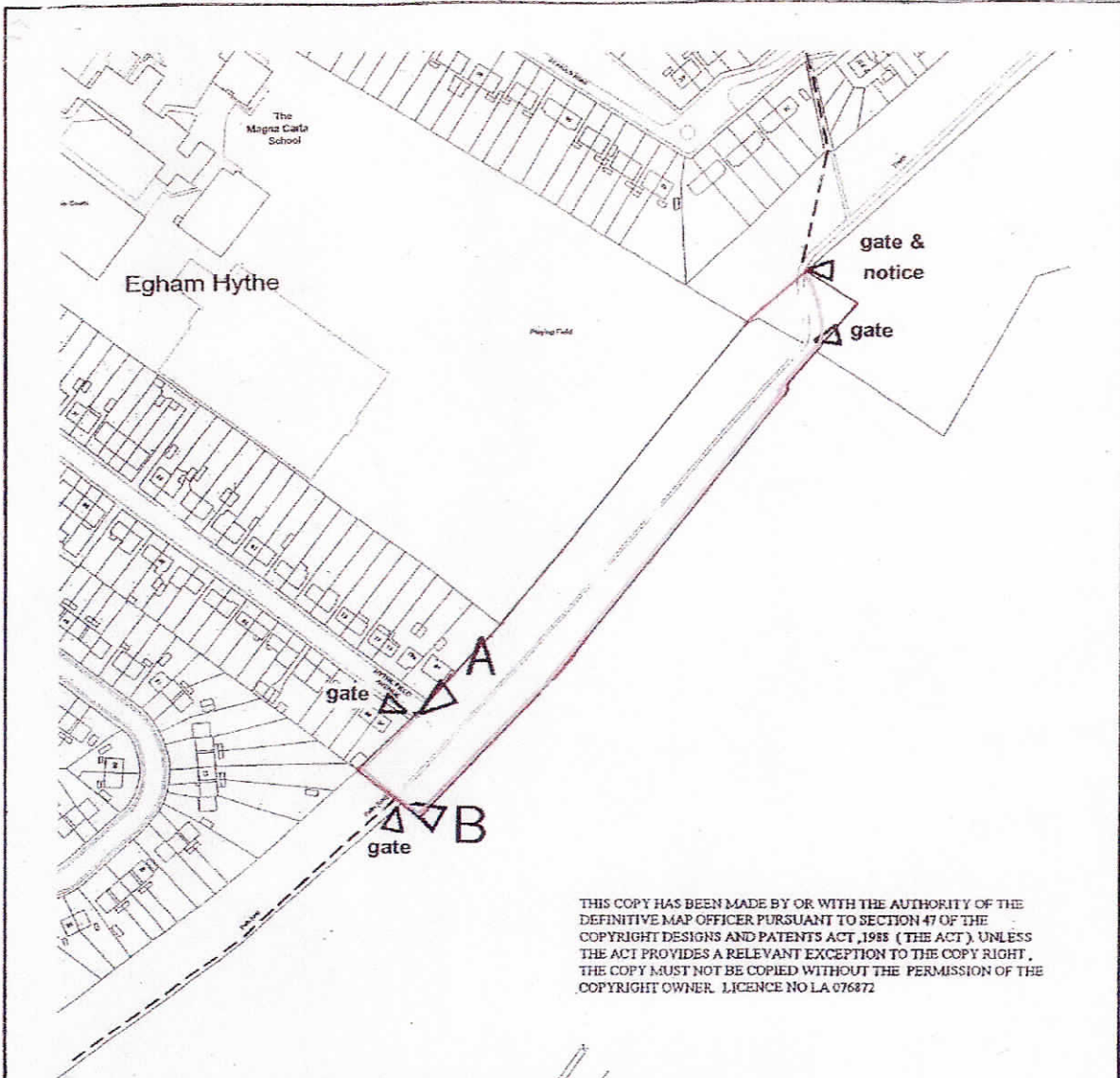
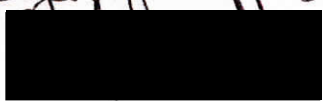
Home Engall & Freeman  
Solicitors  
47a High Street  
Egham  
Surrey TW20 9ES  
Tel: 01784 432292  
Fax: 01784 431964  
DX: 53100 Egham

Before me [Commissioner  
for Oaths or a Justice  
of the Peace or  
Solicitor]



Horne Engall & Freeman  
Solicitors  
47a High Street  
Egham  
Surrey TW20 9ES  
Tel: 01784 432292  
Fax: 01784 431964  
DX: 53100 Egham

This is the Plan referred to in the Statutory Declaration of Caroline Harvey sworn before the High Court on 5<sup>th</sup> day of August 2015



THIS COPY HAS BEEN MADE BY OR WITH THE AUTHORITY OF THE DEFINITIVE MAP OFFICER PURSUANT TO SECTION 47 OF THE COPYRIGHT DESIGNS AND PATENTS ACT, 1988 (THE ACT), UNLESS THE ACT PROVIDES A RELEVANT EXCEPTION TO THE COPY RIGHT, THE COPY MUST NOT BE COPIED WITHOUT THE PERMISSION OF THE COPYRIGHT OWNER. LICENCE NO LA 076872

ALLEGED PUBLIC FOOTPATH SHOWN  
PUBLIC FOOTPATH N° 32 SHOWN  
DISTANCE A-B= 49M

Grid Ref. at A: 0302 7059  
O.S. Sheet: TQ 02 0370



Scale 1:2500

**WILDLIFE AND COUNTRYSIDE ACT 1981**  
**MAP MODIFICATION ORDER**  
**RUNNYMEDE BOROUGH COUNCIL**  
**EGHAM**



**SURREY**  
COUNTY COUNCIL  
Sustainable Development

Drg. No. 3 / 1 / 88 / H5a