

**STATUTORY DECLARATION**

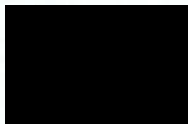
**SECTION 31(6) OFF THE HIGHWAYS ACT 1980**

I, **PAUL REEVES** Group Chief Executive of Surrey Heath Housing Association Limited **DO SOLEMNLY AND SINCERELY DECLARE** as follows:-

1. The Association is and has been since 15<sup>th</sup> February 1993 the owner of the land edged red on the plan accompanying this declaration which includes properties in Red Lion Road and Little Heath Road, Chobham.
2. On the 3<sup>rd</sup> day of November<sup>2004</sup> I deposited with Surrey County Council, being the appropriate Council, a statement accompanied by a plan delineating my property by red edging which stated that the way coloured purple on the said plan and on the plan accompanying this declaration had been dedicated as a footpath.
3. On the 3<sup>rd</sup> day of November<sup>2004</sup> I deposited with Surrey County Council, being the appropriate Council, a statutory declaration dated 3 November 2004 stating that no additional ways other than that coloured on the plan accompanying this declaration had been dedicated as a footpath since the deposit of the Statement referred to in 2. above.

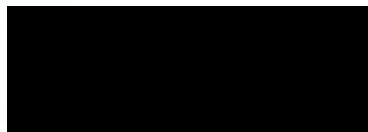
**AND I MAKE** this solemn declaration on the 3<sup>rd</sup> day of November 2004 conscientiously believing it to be true and by virtue of the Statutory Declarations Act 1835.

**DECLARED** at Sutton House (Penelope)  
in the County of Brookwood, Surrey  
This 3<sup>rd</sup> day of November 2004 )



On behalf of Surrey Heath  
Housing Association

Before me



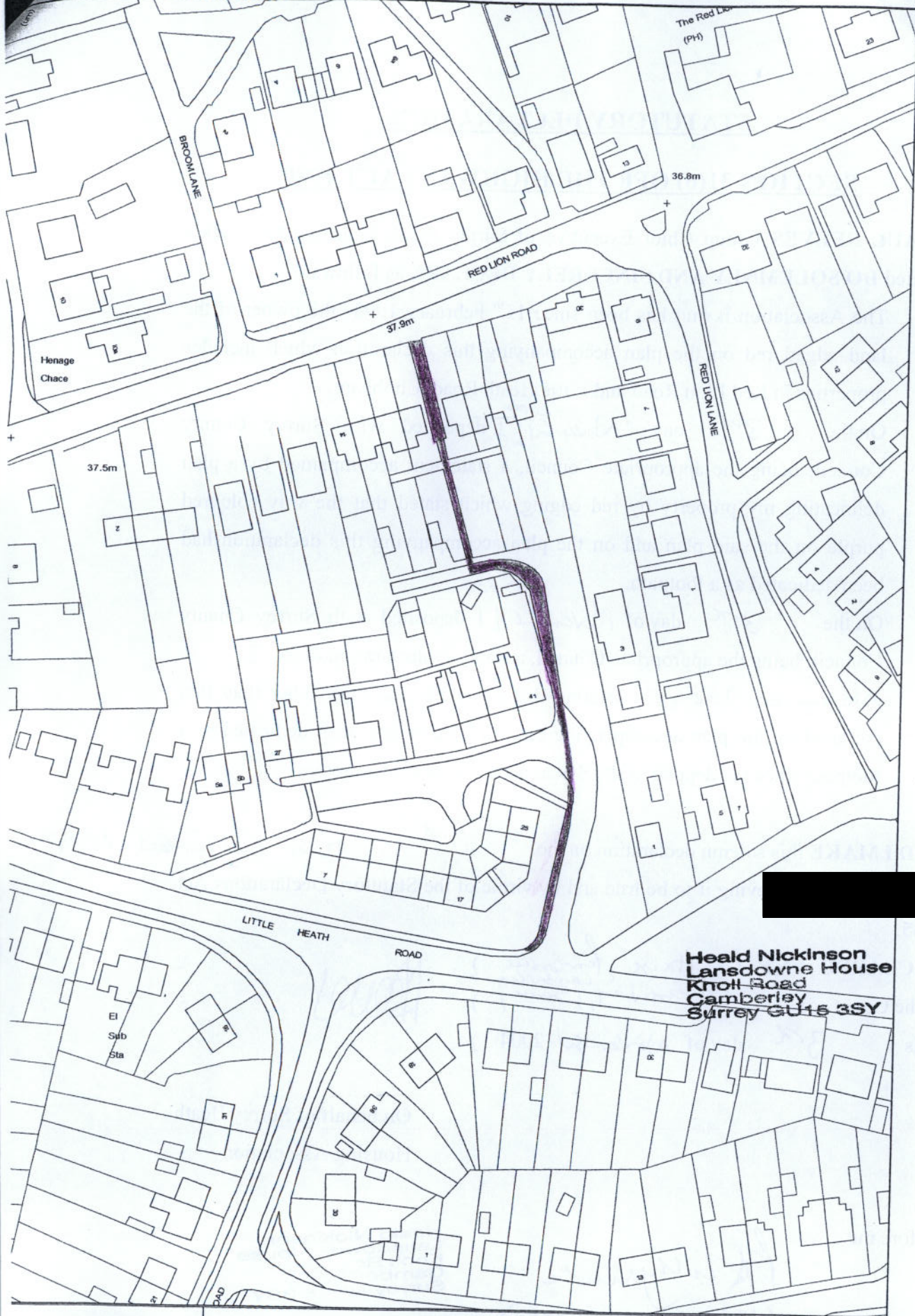
(MRS. P. A. LILLYWHITE)

**Heald Nickinson**  
Lansdown House  
Knoll Road  
Camberley  
Surrey GU15 3SY

[~~Commissioner for Oaths or a Justice of the Peace or Solicitor~~]



# Location of public footpath 208 (Chobham)



Heald Nickinson  
Lansdowne House  
Knoll Road  
Camberley  
Surrey GU15 3SY

1:1250

© Crown copyright. All rights reserved.  
Surrey County Council, licence No. LA076872, 2002

Date: 13/07/04



# Dedication of public footpath 208 (Chobham)



Heald Nickinson  
Lansdowns House  
Knoll Road  
Camberley  
Surrey GU15 3SY

Scale 1:1250

© Crown copyright. All rights reserved.  
Surrey County Council, licence No. LA076872, 2002

Date: 13/07/04





Heald Nickinson  
 Lansdowne House  
 Knoll Road  
 Camberley  
 Surrey GU15 3SY

FILE  
 H.M.  
 7