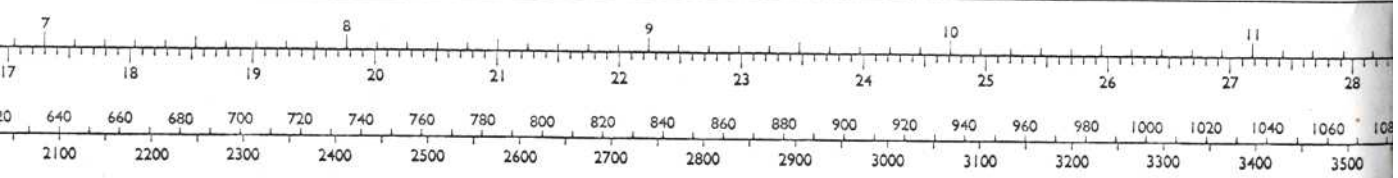


FRENSHAM C P



BOUNDARIES

England & Wales		
.....	Geographical County
.....	Admin County
.....	County Borough
.....	London Borough
.....	County Districts
.....	Civil Parish
.....	Rural Borough
.....	Partly Constituency & Ward
.....	Co Const Bdy
.....	Borough Const & Ward Bdy
.....	Borough Const Bdy
.....	County Districts
.....	County Borough
.....	Admin County
.....	Geographical County
.....	Partly Constituency & Ward
.....	Borough Const & Ward Bdy
.....	Borough Const Bdy
.....	Civil Parish
.....	Rural Borough
.....	County Districts
.....	London Borough
.....	County Borough
.....	Admin County
.....	Geographical County

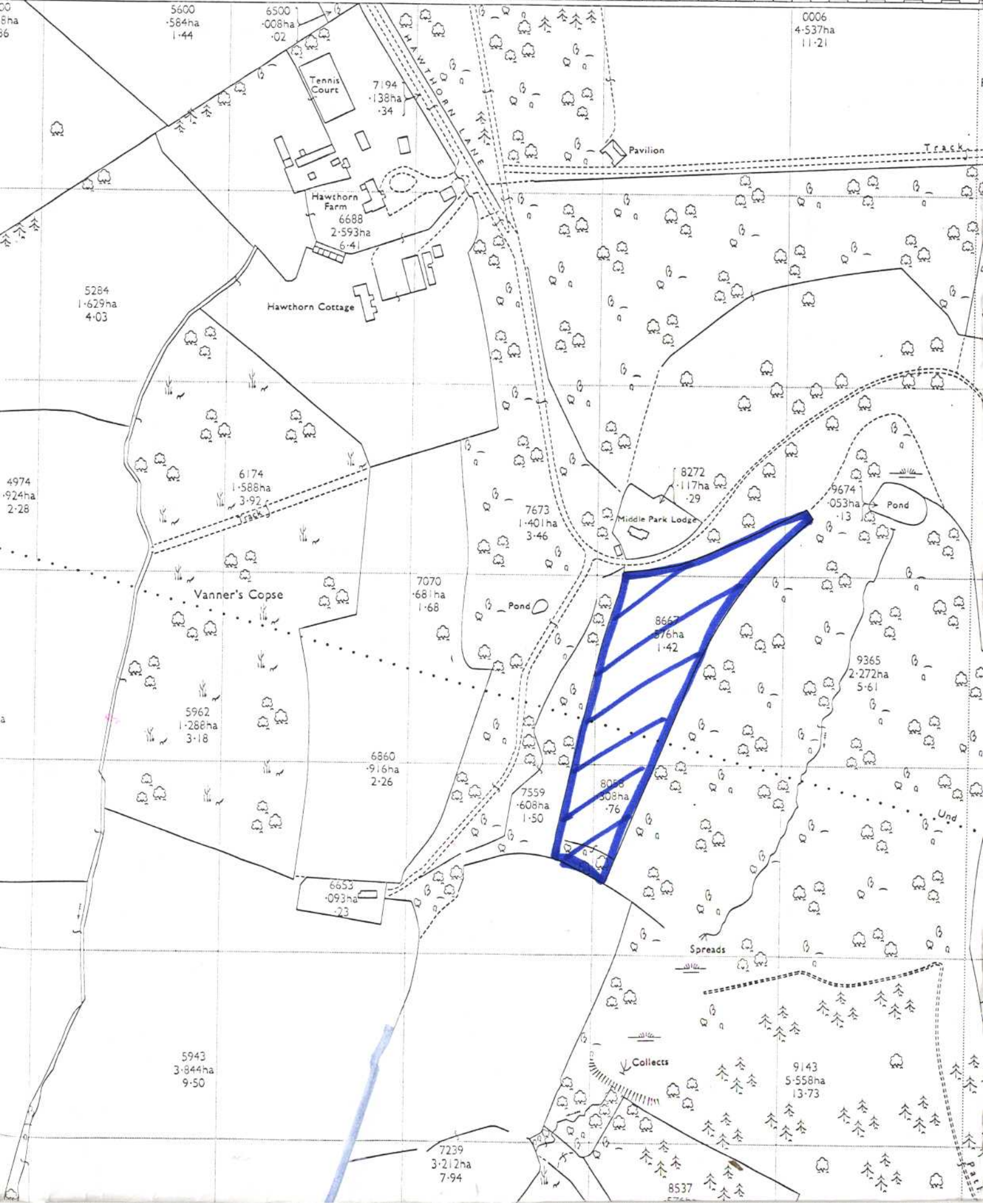
Where the boundary of an Admin Co, County Borough or Co of City is coincident with that of a geographical county boundary is usually coincident with civil parish boundary and the symbols for both are shown, e.g. but where any other boundary coincides with that of a civil parish the symbol for the latter only is shown, e.g.

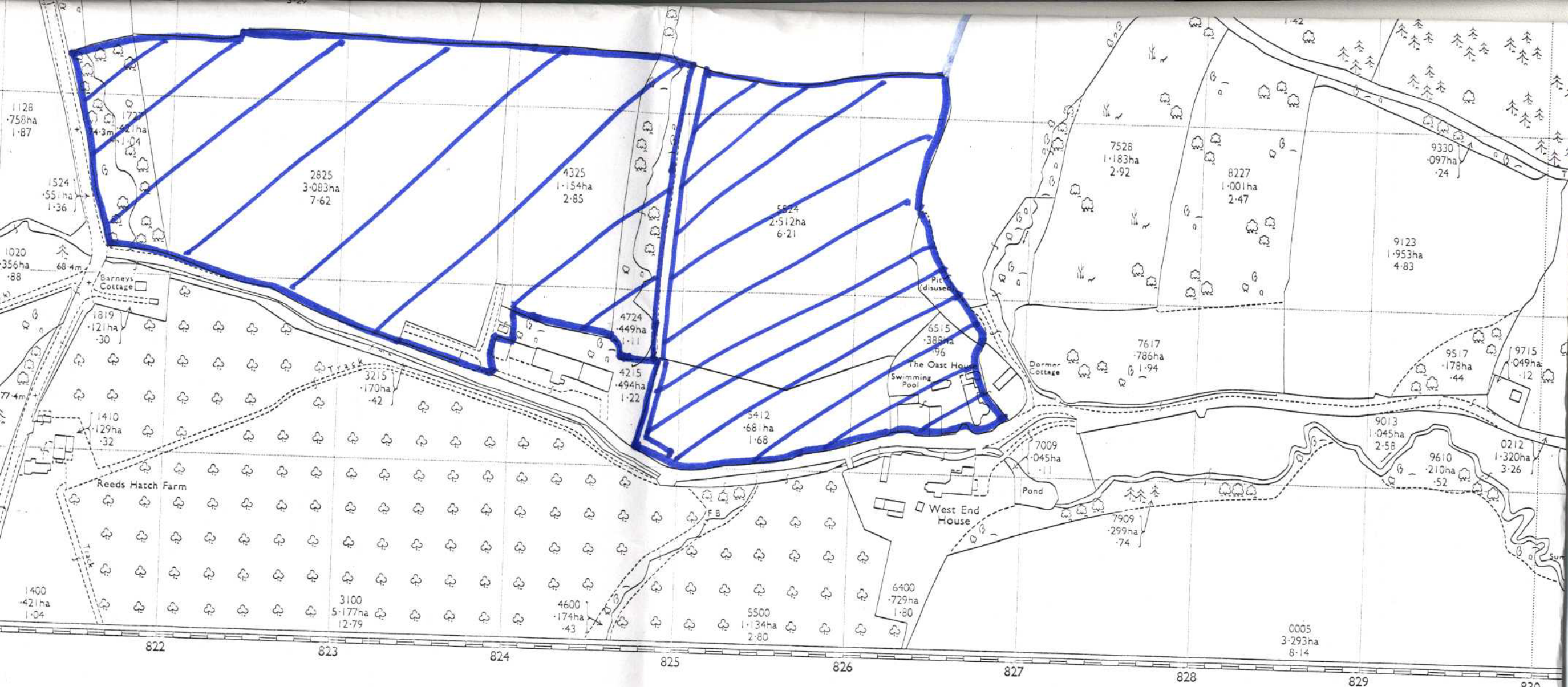
Boundary mereings

B.B.....	Base of Bank	C.R.....	Centre of Road, etc.	F.F.....	Face of Fence
C.B.....	Centre of Bank	C.S.....	Centre of Stream, etc.	F.W.....	Face of Wall
C.C.S.....	Centre of Covered Stream	Def.....	Defaced	R.H.....	Root of Hedge
C.D.....	Centre of Drain, etc.	E.K.....	Edge of Kerb	S.R.....	Side of River, etc.

FARNHAM UD & CP

825 826 827 828 829 83





of the Ordnance Survey, Southampton.

COMPILATION DATA

Levelled.....1952.53
 Boundaries Aug 1973

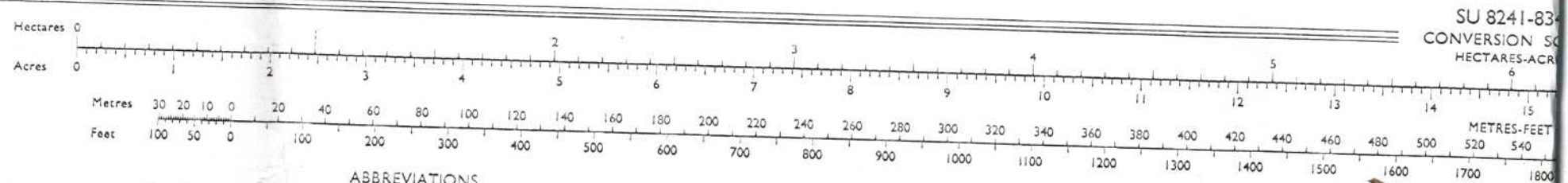
BEFORE
SOLICITOR

scale (photographically reduced)

County Series plans and revised.

publication of this plan may be available. Enquiries should be
 sent to the local Ordnance Survey office.

given in METRES above the Newlyn Datum.
 later levelling information and particulars of bench marks
 are obtainable from the Director General, Ordnance Survey.
 road, track or path is no evidence of the existence of a right of way.
 of tunnels where shown is approximate.



SU 8241-834
 CONVERSION SCALE
 HECTARES-ACRES

ABBREVIATIONS

B.H.	Beer House	L.B. Sta.	Lifeboat Station	P.T.P.	Police Telephone Pillar
B.M.	Bench Mark	L.C.	Level Crossing	R.H.	Road House
B.P.	Boundary Post	L.G.	Loading Gauge	rp.	Revision Point
B.S.	Boundary Stone	L.Ho.	Lighthouse	S.	Stone
C.	Crane	L.Twr.	Lighting Tower	S.B.	Signal Box
C.H.	Club House	m.	Metres	S.Br.	Signal Bridge
Chy.	Chimney	M.H.W.	Mean High Water	S.D.	Sundial
Cn.	Capstan	M.H.W.S.	Mean High Water Springs	S.L.	Signal Light
D.Fn.	Drinking Fountain	M.L.W.	Mean Low Water	Sl.	Sluice
Dk.	Dock	M.L.W.S.	Mean Low Water Springs	S.P.	Signal Post
ELP.	Electricity Pillar or Pole	M.P.	Mile or Mooring Post	Spr.	Spring
ETL.	Electricity Transmission Line	M.P.U.	Mail Pick-up	S.Sta.	Signal Station
F.A.	Fire Alarm	M.S.	Mile Stone	T.C.B.	Telephone Call Box
F.A.P.	Fire Alarm Pillar	N.T.	National Trust	T.C.P.	Telephone Call Post
F.B.	Filter Bed or Foot Bridge	N.T.L.	Normal Tidal Limit	Tk.	Tank or Track
F.B.M.	Fundamental Bench Mark	N.T.S.	National Trust for Scotland	Tr.	Trough
F.S.	Flagstaff	P.	Pillar, Pole or Post	ts.	Traverse Station
F.Sta.	Fire Station	Path (um).	Unmade Path	W.	Well
G.P.	Guide Post	P.C.	Public Convenience	W.B.	Water
G.V.C.	Gas Valve				

SYMBOLS

	Non-coniferous trees		Rough grassland
	Coniferous trees		Heath
	Surveyed trees		Bracken
	Orchard trees		Sluice
	Coppice, osier		Trough
	Scrub		Tank or Track
	Signal Post		Telephone Call Post
	Signal Light		Telephone Call Box
	Signal Bridge		Signal Station
	Signal Box		Signal Post
	Stone		Spring
	Revision Point		Sundial
	Road House		Signal Light
	Police Telephone Pillar		Sluice
	Lifeboat Station		Signal Post
	Level Crossing		Spring
	Loading Gauge		Signal Station
	Lighthouse		Telephone Call Box
	Lighting Tower		Telephone Call Post
	Metres		Tank or Track
	Mean High Water		Trough
	Mean High Water Springs		Traverse Station
	Mean Low Water		Well
	Mean Low Water Springs		Water
	Mile or Mooring Post		
	Mail Pick-up		
	Mile Stone		
	National Trust		
	Normal Tidal Limit		
	National Trust for Scotland		
	Pillar, Pole or Post		
	Unmade Path		
	Public Convenience		